

The King

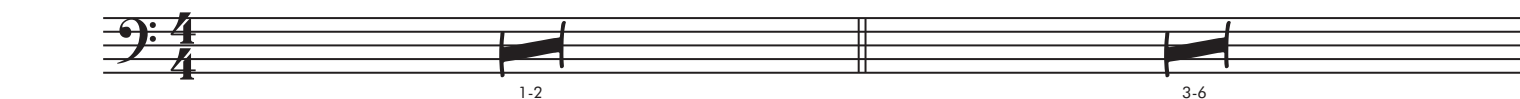
v01

Alex Brinkley

Pompous ♩ = 98

2

4



Broadly

Measures 35-38. Measure 35 starts with a double bar line and a *ff* dynamic. The notation includes eighth and sixteenth notes with slurs and accents. Measure 38 ends with a double bar line.

Legato

Measures 39-42. Measure 39 starts with a double bar line. The notation includes quarter and eighth notes with slurs and accents. Dynamics *p*, *f*, *mf*, *p*, *f*, and *mf* are indicated with hairpins. Measure 42 ends with a double bar line.

Measures 43-46. Measure 43 starts with a double bar line. The notation includes quarter and eighth notes with slurs and accents. Dynamics *f* and *mf* are indicated with hairpins. Measure 46 ends with a double bar line.

Measures 47-48. Measure 47 starts with a double bar line. The notation includes quarter and eighth notes with slurs and accents. Dynamics *f*, *mf*, and *ff* are indicated with hairpins. Measure 48 ends with a double bar line.